

Waveguide High Power Circulators

Part Number: KTWC220-24B

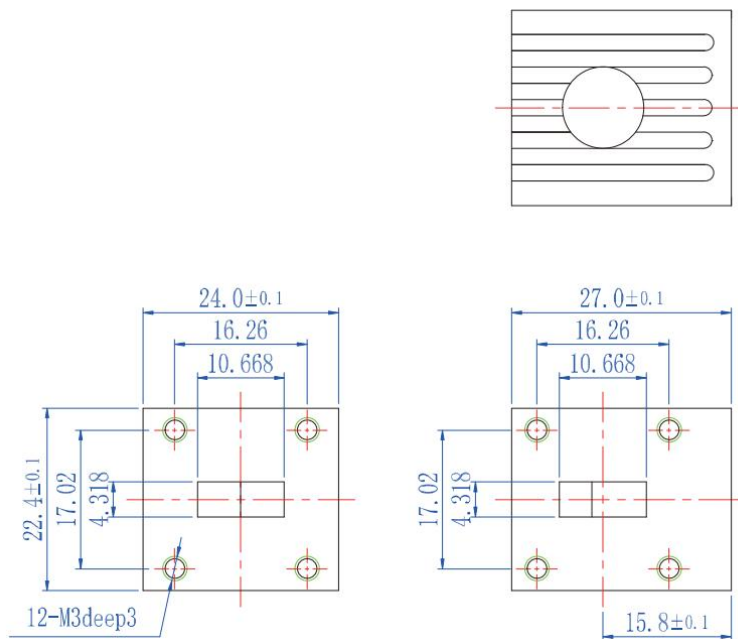
Key Features

- Broad Frequency Range: 17.5GHz-26.7GHz
- High Forward Power: 500W
- High Isolation, Low Insertion Loss
- Wide Operating Temperature Range: -40°C~+85°C
- Commercial, Military and Space Applications

Electrical Specifications at Room (25°C±5°C) Temperature

Part Number	Freq. Range (GHz)	Relative Bandwidth	Insertion Loss Max. (dB)	Isolation Min. (dB)	VSWR Max.	Peak Power (W)	Duty Ratio	Waveguide Type
KTWC220-24B	17.6 - 26.7	5%	0.3	20	1.20	500	10%	WR42

Mechanical Dimensions (mm)



HOW TO ORDER

